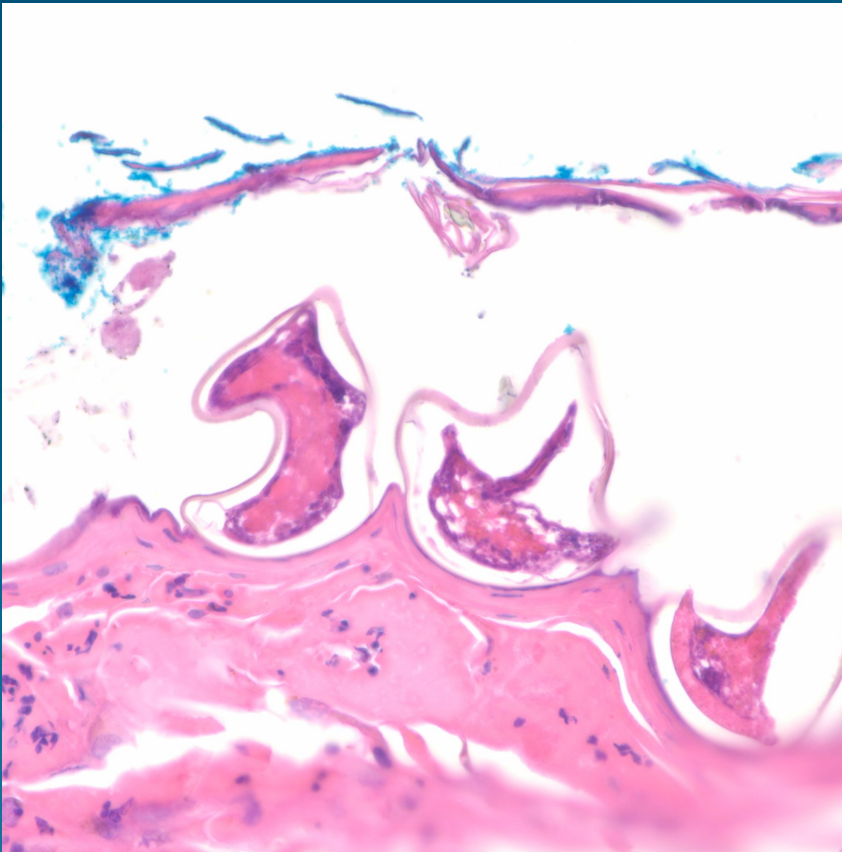


What is the best diagnosis?

- A. Demodex
- B. Louse
- C. Scabies
- D. Bott Fly
- E. Lobomycosis

Scabies

Pearls



- Mite is only located in the stratum corneum
- Look for rigid cuticle
- May see scybula (feces)- this is sufficient for diagnosis
- Variable inflammatory response, occasionally a nodular collection of eosinophils